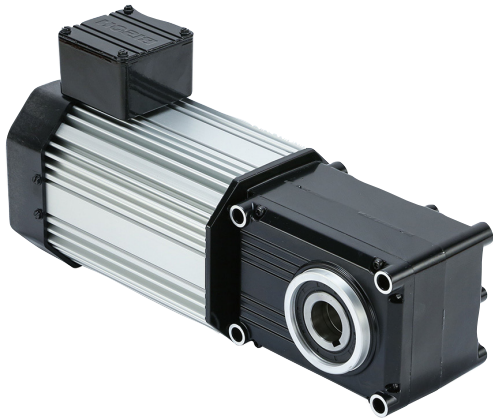


Maximum Efficiency Right-angle Gearmotors

730 115V Single Phase (2-stage)



The heavy duty PowerSTAR® 730 Series 2-stage 115V single phase right-angle gearmotor offers up to 982 in-lbs of torque running continuously for reliable and energy efficient operation.

730 Series 1PH 115V Ratios 10:1 to 60:1- TEFC*

Part Number	Speed (RPM)	Torque (in-lbs)	Input HP	Gear Ratio	OHL (lbs)	Rated Current 115V (Amps)	Hz
026-730A0010T	160	168	1/2	10	465	5.3	60
026-730A0015T	108	239	1/2	15	520	5.3	60
026-730A0020T	80	327	1/2	20	565	5.3	60
026-730A0030T	53	487	1/2	30	625	5.3	60
026-730A0040T	40	655	1/2	40	675	5.3	60
026-730A0050T	32	814	1/2	50	720	5.3	60
026-730A0060T	27	982	1/2	60	760	5.3	60

*Capacitors required - offered separately. See accessories on page 17

